

Global Trusted Professional Elevator  
Manufacturing Service Supplier

# FUJI SL ELEVATOR

Safety Lift



**Unlimited Service**

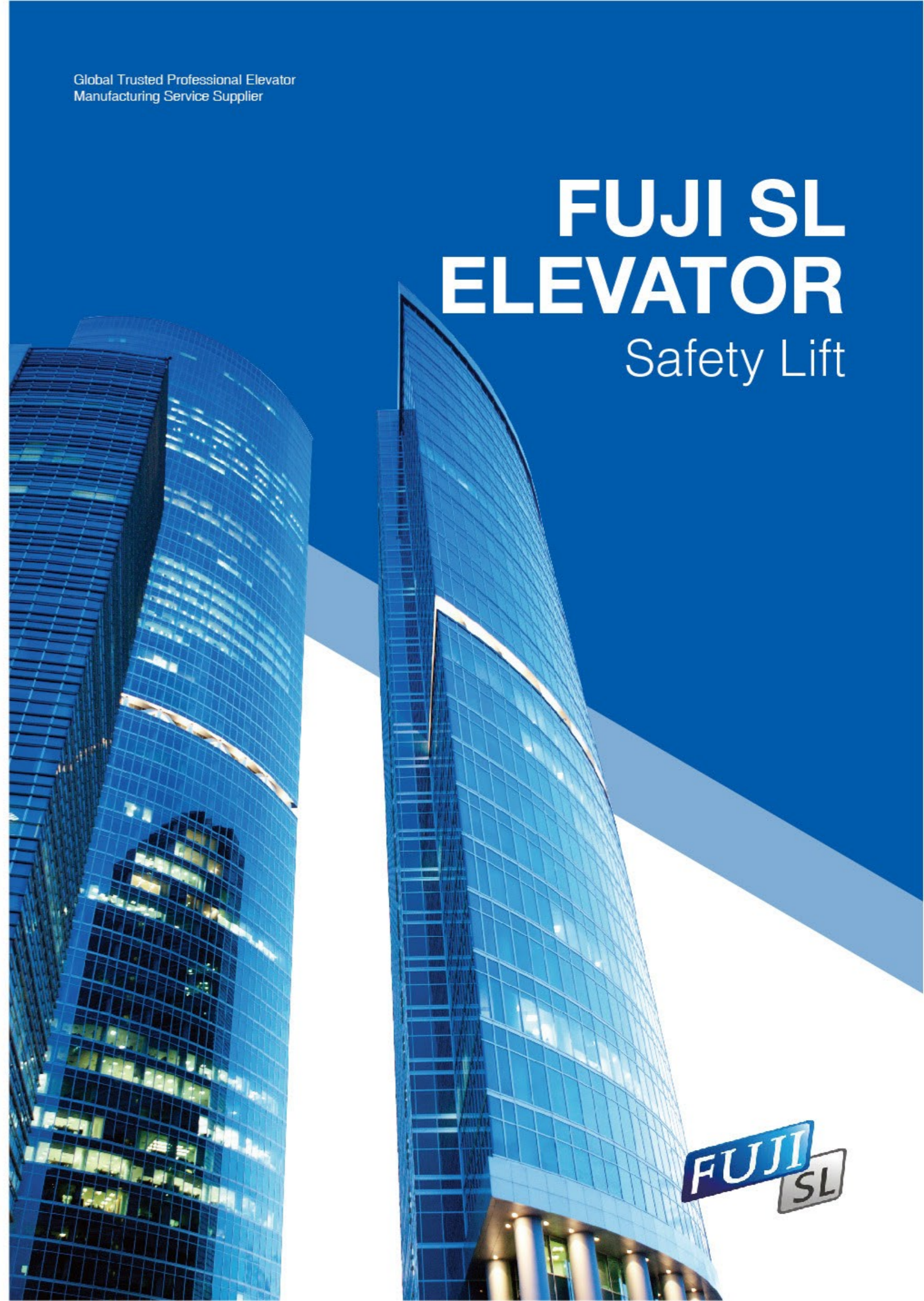
**SL ELEVATOR CO.,LTD.**

Add: No.18, Gu Ying Road, Nanxun, Huzhou, Zhejiang, China

Tel: 86-572-2900617 Fax: 86-572-2900618

Email: sales@sl-elevator.com

Web: www.sl-elevator.com



FUJI SL Elevator is a complete elevator manufacturer, who started production of quality complete elevators & escalator in 2002 with right now 300 staffs. Being the first to manufacturer four-sides door opening elevator. FUJI SL established it awareness as a brand of quality complete elevator.

FUJI SL Elevator moves on by creating and designing novel elevators and manufacturing it by our own workshop or carefully sourcing from manufacturing partner.

Our quality products and good after-sale service turn out to have a big market share in Middle East, Russia, South America, South East Asia and Africa.

As we understand what quality, safety and uniqueness mean to every user, customization is one of our key focus of service.

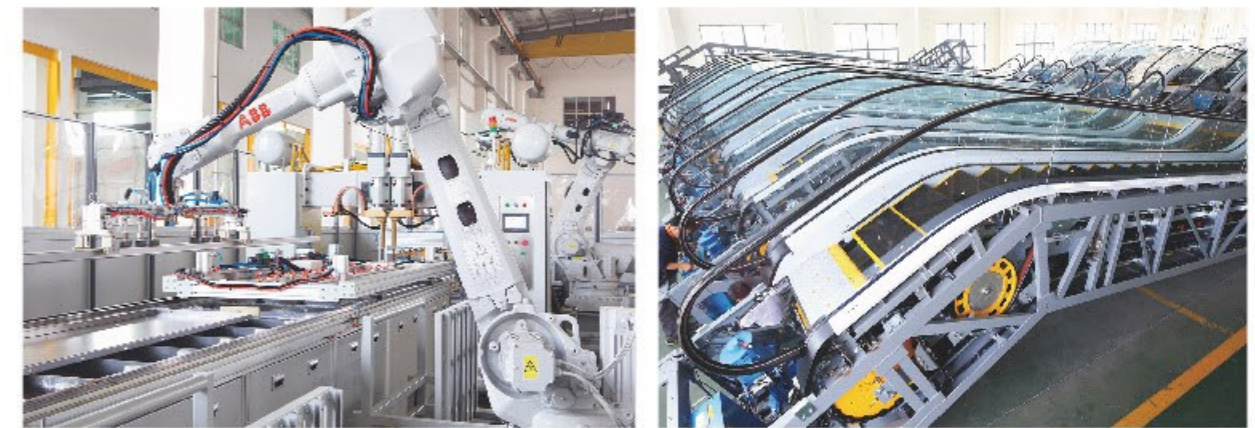
We proudly tailor-made almost any part of elevator & escalator to offer the best solution for every project.



## Build a globally trusted brand

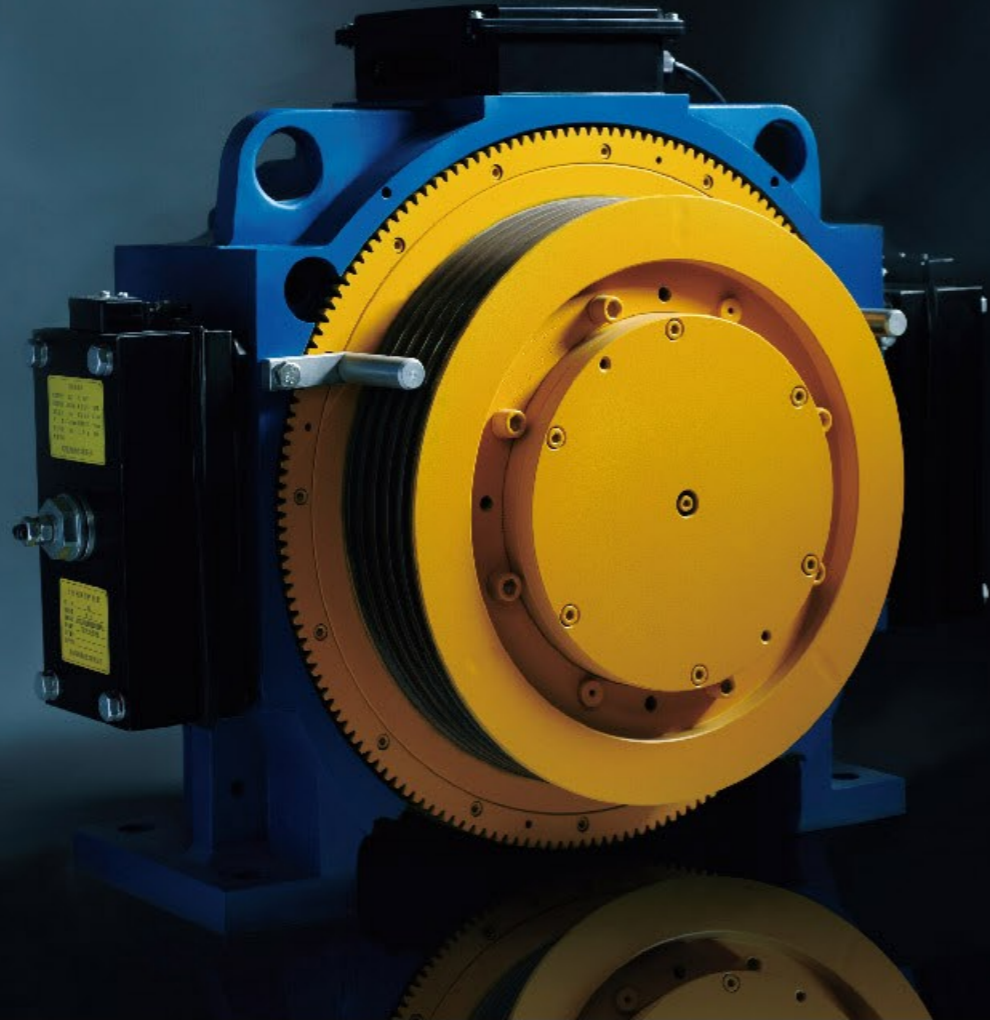
FUJI SL international business started from 2007, during these years, we sell elevators to more than 35 countries.

We have a modern elevator production factory about 60,000 square meters and professional R&D team. 80 meters high test tower can carry out quality and safety test for all vertical elevators speed ranging from 0.5m/s to 6.0m/s



**30%**  
Save energy

**0**  
Pollution

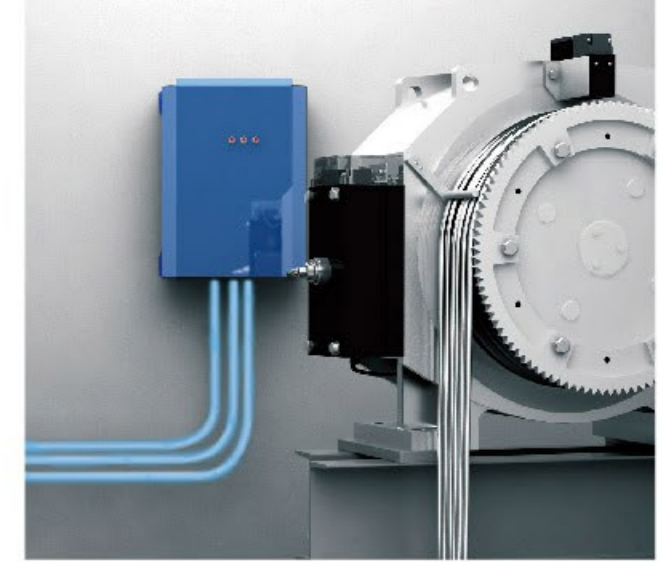


### Permanent magnet synchronous traction drive

The use of energy efficient permanent magnet synchronous gearless traction drive achieves energy savings by over 30%, low noise, compared with traditional traction machines; meanwhile, the absence of cumbersome lubrication system completely solves oil pollution problems suffered by the traditional traction machine. Braking response is smooth and efficient, safer as well.

### Energy feedback technology

Using the advanced energy feedback technology, motor in the process of braking energy through energy feedback unit back to the grid, which can effectively recycle more than 95% of renewable electricity.



# Energy-saving technology



FUJI SL Elevator is committed to promoting the development of building energy efficiency.

The concept of environmental protection is reflected in every detail of the product.

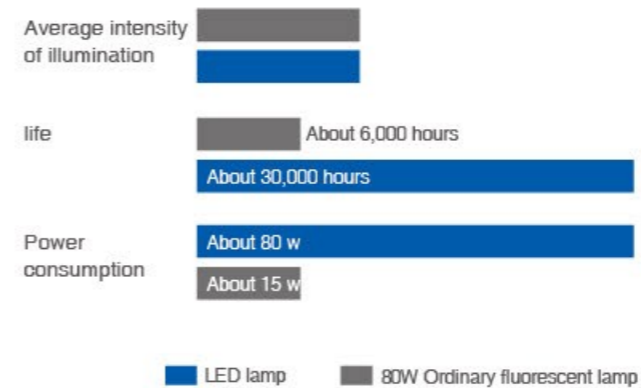
Full range of products can be equipped with a number of energy-saving technologies.

Economical and environment-friendly solutions are provided for your building.

FUJI SL technology obtained international TUV energy-saving certification

### LED lighting system

Using green LED light source, compared to traditional incandescent lamp can save energy up to 80% longer life, light is more soft and comfortable.



### Car energy saving system

Under non operation conditions, the illumination and ventilator in the lift car are closed automatically, and started automatically upon the calling of passengers, so as to achieve the energy saving effect.

# Passenger elevator

FUJI SL Passenger elevator integrates advanced security, energy saving and mute, and upgrades its configuration to a brand-new level, and creates the sample of vertical traffic for all the buildings, and satisfy the needs in the places including the hotels, office buildings and shopping malls.

## We provide the following optional features

### IC card / fingerprint smart system

Makes it able to control the elevator with IC card / fingerprint. The user can prevent the building from interfered by the outside with the IC card / fingerprint to ride the elevator, and ensure safety.



### Elevator air conditioner

Air conditioning is widely used in all kinds of passenger lift, medical lift, sightseeing lift.

The air conditioning according to the requirement of the modern society to human body health, unique design from the elevator hole convulsions, in exchange for fresh air way to its conveying fresh air in the oven, especially suitable for high-grade hotel, hospital, office buildings, government agencies and other important public places, which can effectively avoid, prevention of occupant exhale with pathogenic bacteria of air pollution in the elevator or the air conditioner when inhaled adhere to the secondary pollution caused by dust filtering net.



### Camera function inside car

Cameras installed inside car can real-time monitor the conditions of elevator car in monitoring room, provide better security for passengers.



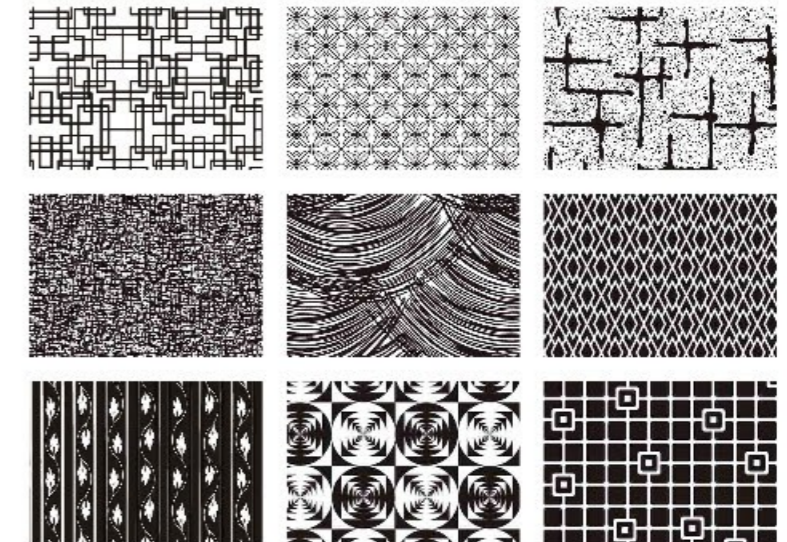
### Earthquake sensor

When an earthquake exceeding the set acceleration (plus) is perceived, it will automatically work and the electrical circuit will be cut off

(OFF) or ON. Combined with the control circuit of elevator, general equipment, service equipment, etc., it is automatic in earthquake

Work, the operation of equipment stop, alarm and other control equipment.

### Custom etching pattern for car and door



# Passenger elevator

Safety is always the first factor included in the FUJI SL's considerations. All FUJI SL's products are equipped with a full range of security devices and combined with the most advanced security technology, which allows users to step into the elevator with no more hesitation.



## UCMP device

When the device detects accidental movement of the car, the system will start the protection to immediately stop the lift car.

## Remote detective function, safety highly optimised

24Hrs Safety monitoring service, give testing result to monitor centre and the phone of maintenance staff, highly improving the safety and shortening the rescue time.

## More protection

Safety gear, overspeed governor, buffer and other safety protection devices are interlocking, always providing multiple protection and more relieved ride for passengers.



## FJSL-01

Ceiling: Hairline stainless steel, Energy saving lamp  
Car wall : Hairline stainless steel  
Floor: PVC

## FJSL-02

Ceiling: Middle with image roof, side of stainless steel floor with tube lamp for soft illumination design  
Car wall: Hairline stainless steel, mirror, etching  
Handrail: Stainless steel tube  
Floor: PVC



The pictures are designed on computer, will be a little different from the actual products.

## MR Structure Passenger Elevator

Load (kg)	Speed (m/s)	Car size (mm) (WidthxDepth)	Door Opening Size (mm)	Hoistway Size (mm) (WidthxDepth)	Overhead (mm)	Pit (mm)	Machine Room Height
450	1	1100 x 1100	700 x 2100	1700 x 1750	4200	1400	2800
	1.75				4500	1500	
630	1.0	1400 x 1100	800 x 2100	2000 x 1750	4200	1500	
	1.75				4400	1600	
800	1.0	1400 x 1350	800 x 2100	2000 x 2000	4200	1500	
	1.75				4400	1600	
	2.0				4500	1700	
	2.5				4800	1850	
	2.5				4200	1500	
1000	1.0	1600 x 1400	900 x 2100	2200 x 2050	4400	1600	
	1.75				4500	1700	
	2.0				4800	1850	
	2.5				4200	1400	
1150	1.0	1700 x 1500	900 x 2100	2600 x 2050	4500	1500	
	1.75				4800	1900	
	2.0				5200	2200	
	2.5				4200	1500	
1250	1.0	1800 x 1500	900 x 2100	2400 x 2150	4400	1600	
	1.75				4500	1700	
	2.0				4800	1850	
	2.5				4200	1400	
1350	1.0	1800 x 1650	900 x 2100	2800 x 2150	4500	1500	
	1.75				4800	1900	
	2.0				5200	2200	
	2.5				4200	1500	
1600	1.0	1800 x 1900	1000 x 2100	2750 x 2350	4400	1600	
	1.75				4500	1700	
	2.0				4700	1850	
	2.5				4200	1400	
2000	1.0	1900 x 2100	1100 x 2100	2900 x 2550	4500	1500	
	1.75				4800	1900	
	2.0				5200	2200	
	2.5				4200	1400	

## MRL Structure Passenger Elevator

Load (kg)	Speed (m/s)	Car size (mm) (WidthxDepth)	Door Opening Size (mm)	Hoistway Size (mm) (WidthxDepth)	Pit (mm)	Overhead (mm)	Pit Reverse (KN)	
							R1	R2
630	1.0	1400 x 1100	800 x 2100	2300 x 1900	1500	4600	64	60
630	1.75	1400 x 1100	800 x 2100	2300 x 1900	1600	4750	64	60
800	1.0	1400 x 1350	800 x 2100	2300 x 2000	1500	4600	88	76
800	1.75	1400 x 1350	800 x 2100	2300 x 2000	1600	4750	88	76
1000	1.0	1600 x 1400	900 x 2100	2500 x 2050	1500	4600	100	85
1000	1.75	1600 x 1400	900 x 2100	2500 x 2050	1600	4750	100	85
1150	1	1700 x 1500	900 x 2100	2850 x 1950	1400	4500		
	1.75	1700 x 1500	900 x 2100	2850 x 1950	1600	4700		
	2	1700 x 1500	900 x 2100	2850 x 1950	1900	5200		
	2.5	1700 x 1500	900 x 2100	2850 x 1950	2200	5600		
1250	1	1800 x 1500	900 x 2100	3000 x 1950	1400	4500		
	1.75	1800 x 1500	900 x 2100	3000 x 1950	1600	4700		
	2	1800 x 1500	900 x 2100	3000 x 1950	1900	5200		
1350	1	1800 x 1650	900 x 2100	3000 x 2100	1400	4500		
	1.75	1800 x 1650	900 x 2100	3000 x 2100	1600	4700		
	2	1800 x 1650	900 x 2100	3000 x 2100	1900	5200		
1600	1	1900 x 1800	1000 x 2100	3150 x 2250	1400	4500		
	1.75	1900 x 1800	1000 x 2100	3150 x 2250	1600	4700		
	2	1900 x 1800	1000 x 2100	3150 x 2250	1900	5200		
2000	1	1900 x 2100	1100 x 2100	3200 x 2550	1400	4650		
	1.75	1900 x 2100	1100 x 2100	3200 x 2550	1600	4850		
	2	1900 x 2100	1100 x 2100	3200 x 2550	1900	5350		
	2.5	1900 x 2100	1100 x 2100	3200 x 2550	2200	5750		

Note: For high speed:3.0m/s,4.0m/s,6.0m/s, contact us for shaft specification.

# Panoramic elevator

FUJI SL Panoramic Elevator applies the advanced VVVF frequency modulation, voltage regulation and speed governor device, gearless drive mode, shock-proof technology. It designs the best running curve according to human physiological requirements, keeps the smooth & comfortable travel enjoyment and visual aesthetics in the lift starting, accelerating, decelerating and parking process, lifts up the elevator quality to a new and higher level.



## Outer hood of FRP structure

It applies high precision glass fiber reinforced plastic materials to bring about the attractive elevator outline. It perfectly combines with the building and surrounding environments. It displays the compact space, transparent overall style.

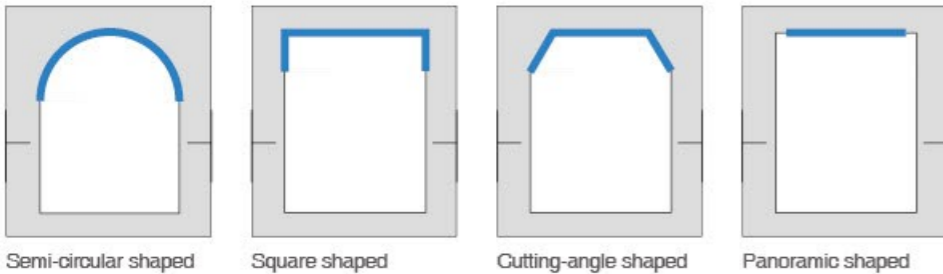
## Smooth and comfortable experience

It applies variable frequency, variable voltage VVVF control mode. It perfectly combines with 32-digit CPU micro-processor. With proper frequency, it fulfills the smooth speed characteristic curve. It thus attains the comfortable elevator travel. It also highly saves the energy.

## Multi-angle scene outside the elevator

It is backed by smooth and comfortable travel, multi-angle scene outside the elevator. It provides the users with the novel style sight-seeing enjoyments.

Various types of cars are available for your choice and can meet different needs



The blue lines in the picture are transparent glass.



## FJSL-G03

Ceiling: hairline stainless steel, acrylic  
 Car wall: hairline stainless steel  
 Car cover: hairline stainless steel  
 Observation wall: 6+6 laminated safety glass  
 Car ceiling: frosted glass  
 Floor: PVC  
 Handrail: hairline brushed

The pictures are designed on computer, will be a little different from the actual products.

## MR structure Square-Panoramic Elevator

Elevator Model	Capacity	Speed	Car Size (mm)		Door Opening Size (mm)			Shaft Size (mm)			
	kg	m/s	Width	Depth	Width	Height	Type	Width	Depth	Pit	Overhead height
SGT 630KG	630KG	1	1400	1100	800	2100	C/O	2300	1700	1600	4500
SGT 630KG	630KG	1.75	1400	1100	800	2100	C/O	2300	1700	1600	4700
SGT 800KG	800KG	1	1400	1350	800	2100	C/O	2300	1900	1600	4500
SGT 800KG	800KG	1.75	1400	1350	800	2100	C/O	2300	1900	1600	4700
SGT 1000KG	1000KG	1	1600	1400	900	2100	C/O	2500	1950	1600	4500
SGT 1000KG	1000KG	1.75	1600	1400	900	2100	C/O	2500	1950	1600	4700

## MRL structure Square-Panoramic Elevator

Elevator Model	Capacity	Speed	Car Size (mm)		Door Opening Size (mm)			Shaft Size (mm)			
	kg	m/s	Width	Depth	Width	Height	Type	Width	Depth	Pit	Overhead height
SGT 630KG	630KG	1	1400	1100	800	2100	C/O	2300	1900	1600	4700
SGT 630KG	630KG	1.75	1400	1100	800	2100	C/O	2300	1900	1800	4800
SGT 800KG	800KG	1	1400	1350	800	2100	C/O	2300	2000	1600	4700
SGT 800KG	800KG	1.75	1400	1350	800	2100	C/O	2300	2000	1800	4800
SGT 1000KG	1000KG	1	1600	1400	900	2100	C/O	2500	2050	1600	4700
SGT 1000KG	1000KG	1.75	1600	1400	900	2100	C/O	2500	2050	1800	4800

Note: Only for reference, final manufacture please follow contract.

# Hospital elevator



FUJI SL Hospital elevator design focuses on safety, stability and humanistic care. The personalized customization aims at meeting medical demands, and hold medical devices, such as stretchers. The waistline encircling lighting of the lift car makes the inner environment more spacious and comfortable. The handrail design fully caters to passengers' demands. The barrier-free function can meet use requirements of special population groups. All these show its humanistic care.

## Additional Features

### Half height mirror on rear side of cabin wall

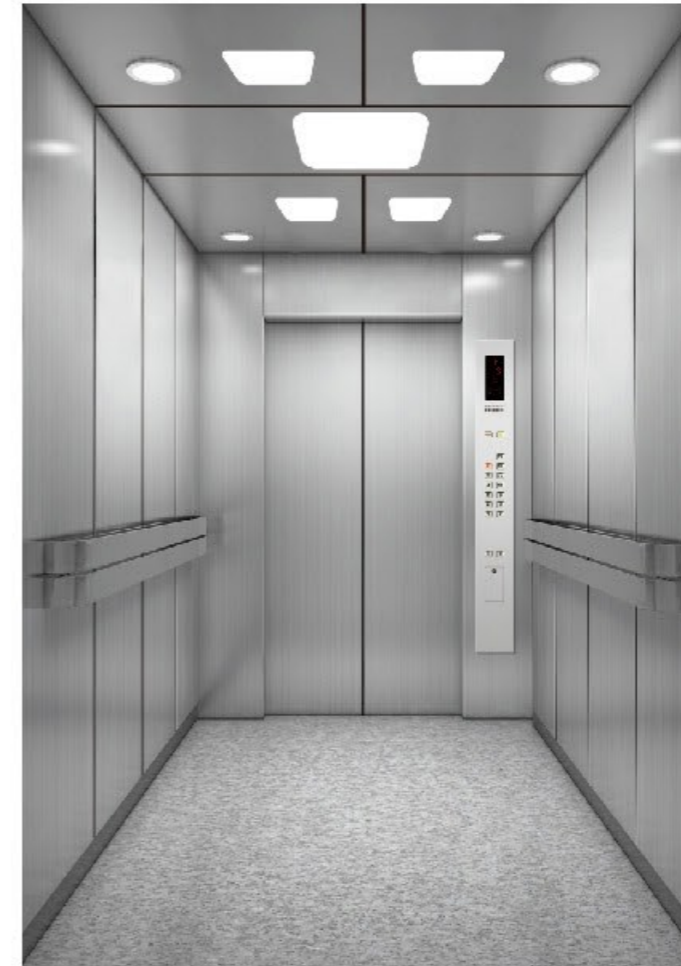
Mirror effect increases the sense of space in the car, and at the same time facilitates wheelchair passengers to see the number of floors and enter and leave freely.

### Additional horizontal COP for wheelchair passengers

The car is equipped with a horizontal device for the disabled to operate the panel, buttons with braille design, considering the human needs of special people.

### Additional air fan grill at the ceiling

The car is specially equipped with an axial flow fan, which promotes the air flow in the car and forms a real-time replacement with the air outside the car to keep the air inside the car fresh.



## FJSL-B01

Ceiling: Hairline stainless steel, Energy saving lamp  
Car wall : Hairline stainless steel  
Floor: PVC

The pictures are designed on computer, will be a little different from the actual products.

## MR structure hospital elevator

Elevator Model	Rated capacity		Rated Speed	Car Size (mm)		Door Opening Size (mm)		Shaft Size (mm)				Machine room Size (mm)	
	kg	Person	m/s	Width	Depth	Width	Height	Width	Depth	Pit	Overhead height	Width	Depth
SBT 1600KG	1600	21	1.0	1400	2400	1200	2100	2400	2950	1500	4200	4000	5000
SBT 1600KG	1600	21	1.75	1400	2400	1200	2100	2400	2950	1600	4400	4000	5000
SBT 2000KG	2000	26	1.0	1600	2600	1300	2100	2600	3200	1500	4200	4000	5500
SBT 2000KG	2000	26	1.75	1600	2600	1300	2100	2600	3200	1600	4400	4000	5500
SBT 2000KG	—	—	2.5	—	—	—	—	—	—	1800	4800	—	—

## MRL structure hospital elevator

Elevator Model	Rated capacity	Rated Speed	Car Size (mm)		Door Opening Size (mm)		Shaft Size (mm)					
	kg	m/s	Width	Depth	Width	Height	type	Width	Depth	Pit	Overhead height	
SBT 1600KG	1600KG	1	1400	2400	1200	2100	S/O	2550	2950	1500	4700	
SBT 1600KG	1600KG	1.75	1400	2400	1200	2100	S/O	2550	2950	1600	4900	
SBT 2000KG	2000KG	1	1600	2600	1300	2100	S/O	2850	3100	1500	5000	
SBT 2000KG	2000KG	1.75	1600	2600	1300	2100	S/O	2850	3100	1600	5300	

Note: Only for reference, final manufacture please follow contract.

# Home elevator

FUJI SL villa elevator is an exclusive partner to the private residence. Safety, comfort and personalized customization are major requirements. FUJI SL has an edge over its competitors in meeting these requirements. The complete and stable safety system can guarantee superior safety. The diversified cabin decorations are perfectly combined with the private residence.

## Mute bearing

With dual sound insulation wall and super quiet special host, you can hardly feel the noise while the elevator is running.

## Private custom

FUJI SL home elevator has a variety of decor configurations which can also provide you with personalized customization to match your home style.



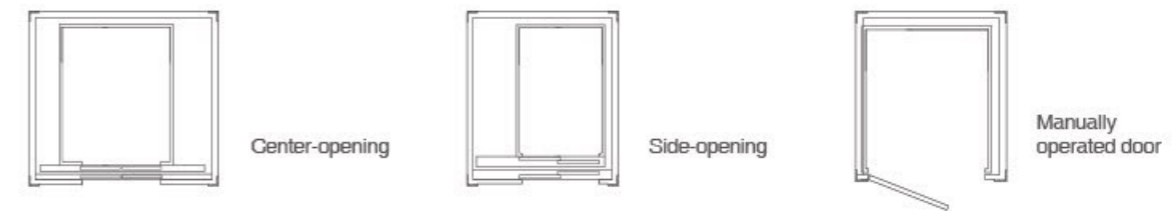
## FJSL-BS001

Ceiling: Wooden polyurethane paint  
Car walls: Wood polyurethane paint / mirror surface  
Floor: PVC

The pictures are designed on computer, will be a little different from the actual products.

## Humanized opening way, satisfy various requirements

Adopt various opening ways for your option, meanwhile opening way can be custom designated according to customer requirements and service condition.



## Home elevator construction parameters (portal frame type)

Model	Load (kg)	Speed (m/s)	Door opening size (mm)	Car size (mm) (WidthxDepth)	Shaft size (mm) (WidthxDepth)	Overhead height (mm)	Pit depth (mm)
SVT	250	0.4	600x2000	950x1000	1600x1350	3600	650
	320	0.4	650x2000	1000x1050	1650x1400	3600	650
	400	0.4	700x2000	1050x1100	1700x1450	3600	650

Note: Only for reference, final manufacture please follow contract.





# Freight Elevator



FUJI SL Freight elevator equips its design with technology which uses the most advanced micro programmed control technology to realize the most convenient smart operation. Coupling with materials with high hardness, makes freight elevator available as an efficient freight helper that integrated intelligent and practicability. More technology creates more economy.

## Cabin with high hardness, strongly fortified

FUJI SL takes the special feature of large load capability into consideration and chooses materials with high hardness to create safe and solid carrier as well as traction system with large load capability and high durability which makes it a mobile safe box both for men and goods.

## Micro programmed control, intelligent freight

The steel body also owns a smart brain which adopts micro programmed multi modules control coupled with digital frequency conversion technology thus realized the best operation curve for acceleration, even speed and deceleration.

## VVVF pressure and speed regulation, energy-efficient

Applied VVVF pressure and speed regulation technology to reasonably optimize operation energy and speed which could save 20% energy in comparison with traditional AC double speed driving, therefore it realizes energy-efficient during intelligent operation.



## FJSL-H01

Car ceiling: Hairline stainless steel  
 Car wall: Hairline stainless steel  
 Car door: Hairline stainless steel  
 Floor: Checkered steel  
 Sill: Aluminium alloy made sill and cast iron made sill

The pictures are designed on computer, will be a little different from the actual products.

## MR structure Freight Elevator

Elevator model	Load	Speed	Car size (mm)		Door opening Size (mm)		Shaft size (mm)				Machine room size (mm)	
	Kg	m/s	Width	Depth	Width	Height	Width	Depth	Pit	Overhead	Width	Depth
SFT 630KG	630	0.5	1168	1600	1100	2100	2100	1950	1500	4300	3000	3500
SFT 1000KG	1000	0.5	1500	1800	1200	2100	2350	2100	1500	4300	3000	3500
SFT 1000KG	1000 Through car	0.5	1500	1900	1200	2100	2350	2250	1500	4300	3500	3500
SFT 2000KG	2000	0.5	2000	2300	1500	2100	2850	2700	1500	4300	3500	4500
SFT 2000KG	2000 Through car	0.5	2000	2400	1500	2100	2850	2750	1500	4300	3500	4500
SFT 3000KG	3000	0.5	2200	2800	1800	2100	3350	3100	1500	4400	4500	5000
SFT 3000KG	3000 Through car	0.5	2200	2900	1800	2100	3350	3250	1500	4400	4500	5000
SFT 5000KG	5000	0.5	2600	3600	2000	2100	3750	3950	1500	4500	4500	5500
SFT 5000KG	5000 Through car	0.5	2600	3700	2000	2100	3750	4050	1500	4500	4500	5500
SFT 10000KG	10000	0.5	2800	5800	2400	2400	4400	6400	1500	4800	4400	6400
SFT 10000KG	10000 Through car	—	—	—	—	—	—	6550	—	—	—	—

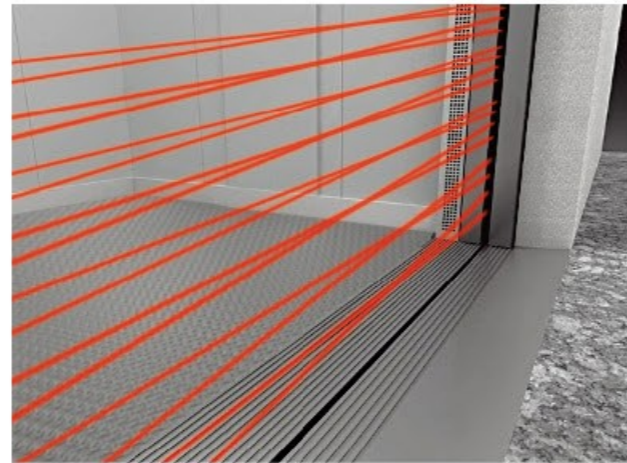
## MRL structure Freight Elevator

Elevator model	Load	Speed	Car size (mm)		Door opening Size (mm)			Shaft size (mm)			
	Kg	m/s	Width	Depth	Width	Height	Type	Width	Depth	Pit	Overhead
SFT 2000KG	2000KG	0.5	2000	2300	1500	2100	4Panels C/O	3100	2700	1500	4600
SFT 2000KG	2000KG	0.5	2000	2400	1500	2100	4Panels C/O, through car type	3100	2750	1500	4600
SFT 3000KG	3000KG	0.5	2200	2800	1800	2100	4Panels C/O	3500	3150	1500	4700
SFT 3000KG	3000KG	0.5	2200	2900	1800	2100	4Panels C/O, through car type	3500	3250	1500	4700
SFT 5000KG	5000KG	0.5	2500	3600	2000	2100	4Panels C/O	3950	3950	1600	5000
SFT 5000KG	5000KG	0.5	2500	3792	2000	2100	4Panels C/O, through car type	3950	4150	1600	5000

Note: Only for reference, final manufacture please follow contract.

# Car elevator

FUJI SL series of car elevators realizes easy transmission of automobiles in multi-space by highly mature elevator manufacturing technology and advanced intelligent control functions, which is suitable for the automobile 4S shop, supermarket roof parking lot, maintenance workshop.

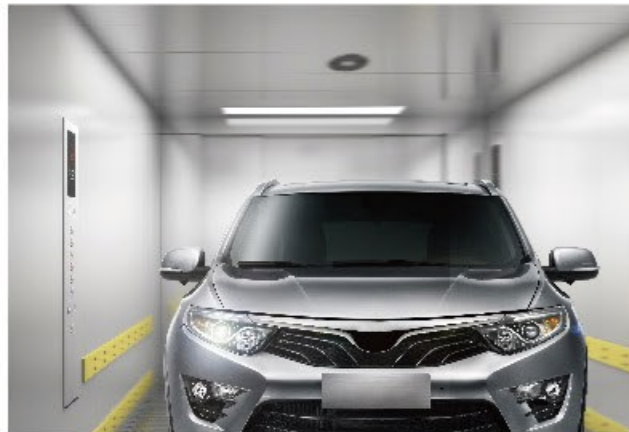


## Intelligent light curtain, invisible guardianship

Elevator door is set up with infrared ray light curtain protection for intelligent induction of vehicles and all-round protection of car access.

## Arrival display, top safety

Dedicated display system gives arrival notice, taking into account of both the car driver and elevator-waiting driver, safe and convenient.



## Double COP

The lift car is designed with double COP, which is of the same height with the parking place, so that the driver can operate elegantly in the car.

## Front and back doors for the lift car

Front and back doors of the lift car are available for cars to conveniently go in and out.



## Car elevator construction parameters

Elevator model	Rated capacity (Kg)	Rated speed (m/s)	Net size of door (mm)	Net size of car (mm)			Shaft size (mm)		Machine room size (mm)			OH (mm)	Pit depth (mm)
				C.W	C.D	C.H	H.W	H.D	MR.W	MR.D	MR.H		
SQT	3000	0.25/0.5	2700x2200	2700	5500	2300	4400	6050	4400	6050	3000	4500	1500
	5000	0.25/0.5	3000x2200	3000	8000	2300	4900	8550	4900	8550	3000	4500	1600

Note: Only for reference, final manufacture please follow contract.

# Dumbwaiter elevator

FUJI SL series dumbwaiter elevator is featured by small space and high efficiency, which is used for fast and economical small volume freight in the building. It arrives in a flash, greatly saving time and human resources, suitable for hotels, restaurants, banks, hospitals, library and so on.



## Multiple modes customized for you

Choose appropriate door opening modes according to features of goods carrying for convenience of goods entrance.

### Table type (Bi-parting)



### Floor type (Bi-parting)



## Exquisite volume, integrate into the building

With compact construction, small space, no machine room, no dedicated hoist, it can be integrated into all kinds of buildings.

## Microcomputer control, accurate delivery

It uses advanced microcomputer control template, to ensure smooth and steady running, accurate leveling and delivery.

## Low consumption operation, energy saving economy

Mechanical and electrical integration, flexible and simple operation, low energy consumption, economical.

## Different uses, different designs

It can be divided into window type and floor type according to different needs.



## Dumbwaiter elevator construction parameters

Elevator model	Load Kg	Speed m/s	Car size (mm)		Door Opening Size (mm)		Shaft size (mm)				Machine room (mm)	
			(W)	(D)	(W)	(H)	(W)	(D)	Pit	Over Head	(W)	(D)
SWJ	100	0.4	750	750	700	1000	1300	900	800	3000	2000	2000
	200		900	900	850	1200	1450	1050	1000	3000	2000	2000
	250		1000	1000	950	1200	1550	1150	1000	3000	2000	2000

Note: Only for reference, final manufacture please follow contract.

# Escalator

FUJI SL escalator has integrated with domestic and foreign advanced technologies to constantly pursue the improvement in technique and perfect in detail. Meanwhile it combines the safety, practicability, durability and visual aesthetics to bring more comfortable and convenient experience for people.



## Stable and reliable, it is safety-oriented

Secured by Control System of Microcomputer, it is equipped with a series of extended functions, not only ensuring the continuous highly-efficient and stable operation of the escalator, but also able to rapidly respond to emergency situations.

## It is durable in use and favorable in performance

Adopting the most advanced domestic and foreign manufacturing techniques, it's designed in large truss. The rigidity and anti-distortion can reach international level.



# Moving walk

FUJI SL moving walk integrate innovative design concepts. Through a reasonable configuration and perfect design, the product is durable, safe and reliable so that passengers feel as steady and comfortable as walking on firm earth. Optional varieties of appearance, material and rich modeling, flexible design can meet demands of large passenger flow volume in large supermarkets, airports, exhibition centers and transport switching stations, etc.



## Conform to Quality/safety Standard

Slip-free grooves on pallet surface have an excellent slip-proof function which makes the ride save and comfortable. Slightly inclined combs can make trolleys easily get on and off. machine with complete protecting function runs smoothly and drives efficiently. Advanced microcomputer controlling system can fully monitor the running status of the moving walk.

## Colorful Decoration

Various style handrails can meet personal demand in different environments. Beautiful stainless steel floor plate has a three-dimensional effect. Inner and outer decking adopts stainless steel.

## Compact Structure, Ease Strain

Short pallets can greatly reduce space span, which can flexibly fits the building structure and save the construction space for the customer. It comprises H version (horizontal) I version (incline) and C version (compact) which can let the customer have a free choice on his original layout.

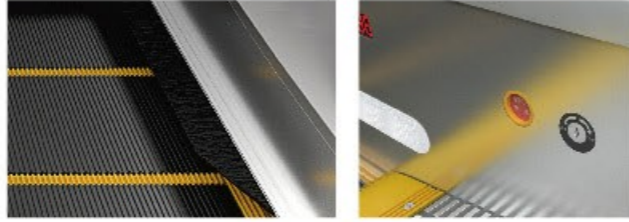
## Incomparable Economical

The moving walk fully utilizes advanced manufacturing process, greatly improves product performance and service life, the most direct result is that the operation cost of the customer is reduced. The optional VF drive technology yields great energy-saving, reducing the running cost to the maximum.

# Safety system

## Skirt panel brush

The brush that has been installed between the skirt panel and the step will prevent the shoes of passengers from touching the skirt panel.



## Emergency stop button

When press the button, the escalator(moving walk) will stop running.



## Drive-chain breaking protection

When the drive-chain has been over-stretched or it is broken, the escalator (moving walk) will stop running automatically .

## Step-chain breaking protector

When the step-chain has been over-stretched or it is broken, the escalator (moving walk) will stop running automatically.

## Step (tread) sunk protection device

When there is abnormal step bending, the escalator (moving walk) will stop running before the step entering into the comb plate.

# Optional functions

## Handrail illumination

The handrail illumination has been installed in the handrail support frame . The gentle light adds charm to the running escalator.

## Auxiliary brake

On the basis of the standard configuration of the main brake, FUJI SL added additional brake, in an emergency, can assist the brake, stop in time.

## Running direction indication lights

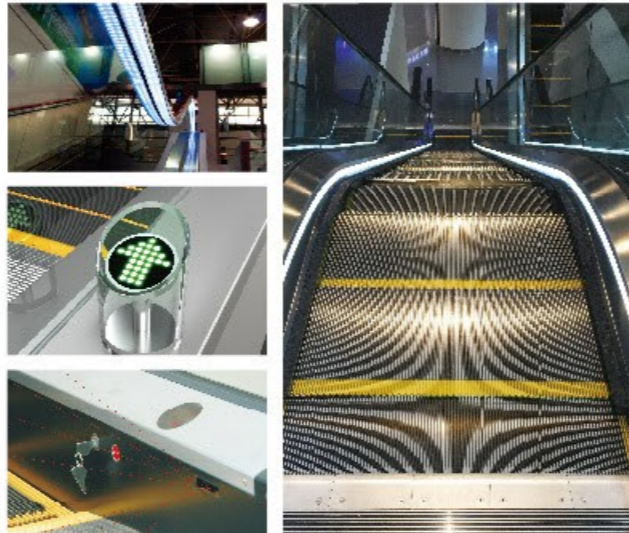
Running direction and running-forbidden display identification is installed in the handrail entrance to show the running or running-forbidden instruction to ensure the safety of passengers.

## LED continuous lights

Escalator arc-shaped entrance is equipped with LED continuous lights, which can illuminate the entrance and exit and improve the overall beauty of the escalator and bring out the best in the architectural environment.

## Step lights on 2 sides

Apron lighting not only has beautiful light, but also stresses the escalator's visibility in the entire building, so that passengers will ride more comfortably and securely.



## Automatic start&stop

The infrared ray sensor which is near the floor can detect the passengers who enter the floor and start running. After the passengers left the escalator, it will stop running to save energy.

## Stainless steel cladding plate

The escalator adopts high strength stainless steel composite plate profile, has the advantages of corrosion resistance, carbon steel good mechanical strength, etc., can ensure the safe operation of the escalator in any environment.

## 30°/35° Escalator construction parameters

Escalator model	A	B	C	D	E
SLF30 / SLF35	600	837	1200	1260	1837
	800	1037	1400	1460	2037
	1000	1237	1600	1660	2237

## 30° Escalator construction parameters

Escalator model	SL30-600 (4500P/hour)				SL30-800 (6750P/hour)				SL30-1000 (9000P/hour)			
	Supporting load			Motor power	Supporting load			Motor power	Supporting load			Motor power
Traveling height	N.Q	R1	R2	KW	N.Q	R1	R2	KW	N.Q	R1	R2	KW
3000	57	46	41	5.5	59	52	47	5.5	60	56	50	5.5
3500	60	49	44	5.5	63	56	50	5.5	64	60	53	8.0
4000	64	52	47	5.5	67	60	54	5.5	67	64	57	8.0
4500	68	56	50	5.5	71	64	57	8.0	71	67	60	8.0
5000	71	59	53	8.0	74	68	60	8.0	74	71	64	11
5500	75	62	56	8.0	82	74	66	11	82	77	69	11
6000	79	65	59	11	86	78	69	11	85	81	72	11

## 35° Escalator construction parameters

Escalator model	SL35-600 (4500P/hour)				SL35-800 (6750P/hour)				SL35-1000 (9000P/hour)			
	Supporting load			Motor power	Supporting load			Motor power	Supporting load			Motor power
Traveling height	N.Q	R1	R2	KW	N.Q	R1	R2	KW	N.Q	R1	R2	KW
3000	54	43	39	5.5	56	49	44	5.5	60	56	50	5.5
3500	57	43	41	5.5	60	52	47	5.5	64	60	53	8.0
4000	60	49	44	5.5	63	56	50	5.5	67	64	57	8.0
4500	64	52	46	5.5	66	59	50	8.0	71	67	60	8.0
5000	67	54	49	8.0	70	62	56	8.0	74	71	64	8.0
5500	70	57	51	8.0	73	65	59	8.0	82	77	69	11
6000	73	60	54	8.0	76	69	61	8.0	85	81	72	11

## Moving walk construction parameters

Measurement: mm

The construction supporting force includes the vibration load (KN)

Nointermediate supporting	One intermediate supporting	Two intermediate supporting
$R_0=0.0045xL+11$	$R_0=0.0045xLa+11$ $R_u=0.0045xLb+5$	$R_0=0.0045xLa+11$ $R_u=0.0045xLb+5$
$R_u=0.0045xL+5$	$S1=0.00585x(La+Lb)$	$S1=0.00585x(La+Lc)$ $S2=0.00585x(Lb+Lc)$

Model	Traveling height		Intermediate supporting		La (mm)	Lb (mm)	Lc (mm)
	From	To	S1	S2			
SLR	1601	2663	-	-	-	-	-
	2664	4151	1	-	L-7000	7000	-
	4152	5851	1	-	15000	L-15000	-
	5852	6000	1	1	15000	7000	L-22000

Note: Only for reference, final manufacture please follow contract.

# Control operation panel (COP)

## Split control box



FJSL-CZB9



FJSL-CZB13

### FJSL-CZB9

Integrated operation panel  
Build-in with cabin wall type

### FJSL-CZB13

Integrated operation panel  
Build-in with cabin wall type

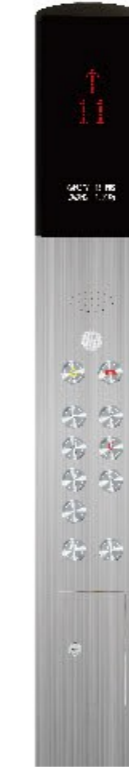
Horizontal COP for  
wheelchair passenger  
(optional)



FJSL-CZB4



FJSL-CZB5



FJSL-CZB7



FJSL-CZB8



FJSL-CZB10



FJSL-CZB12



FJSL-CZB191



FJSL-CZB192



FJSL-CZB311



FJSL-CZB401



FJSL-CZB451

Note: Any word in this publication is not responsible for function & quality of any products, or any expression and revision of sales contract.

# Hall operation panel (HOP)



## Boxless type



**FJSL-LOP4**  
388X118(mm)



**FJSL-LOP8**  
420X110(mm)



**FJSL-LOP10**  
350X100(mm)



**FJSL-LOP12**  
360X100(mm)



**FJSL-LOP401**  
325X90(mm)



**FJSL-LOP13**  
360X100(mm)



**FJSL-LOP14**  
335X90(mm)



**FJSL-LOP15**  
360X100(mm)



**FJSL-LOP16**  
320X95(mm)



**FJSL-LOP17**  
340X90(mm)

## Touch type



**FJSL-LOP191**  
375X105(mm)



**FJSL-LOP192**  
375X105(mm)



**FJSL-LOP231**  
248X92(mm)

## With box type



**FJSL-LOP5**  
440X120(mm)



**FJSL-LOP7**  
450X120(mm)



**FJSL-LOP9**  
440X120(mm)



**FJSL-LOP11**  
440X110(mm)

## No display external call



**FJSL-BZ182**



**FJSL-BZG401**



**FJSL-BZG411**



**FJSL-BZG451**

Note: Any word in this publication is not responsible for function & quality of any products, or any expression and revision of sales contract.

# Decoration series

## Transom display



## Villa elevator COP



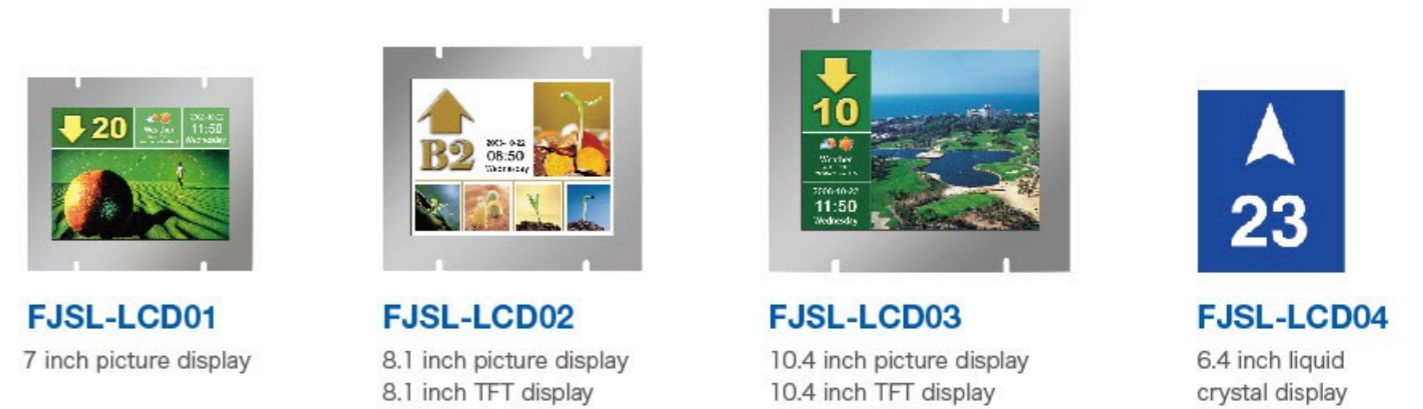
## Villa elevator HOP



## Arrival indicating lamp (optional)



## COP display



## Optional button



Note: Any word in this publication is not responsible for function & quality of any products, or any expression and revision of sales contract.



# Decoration series

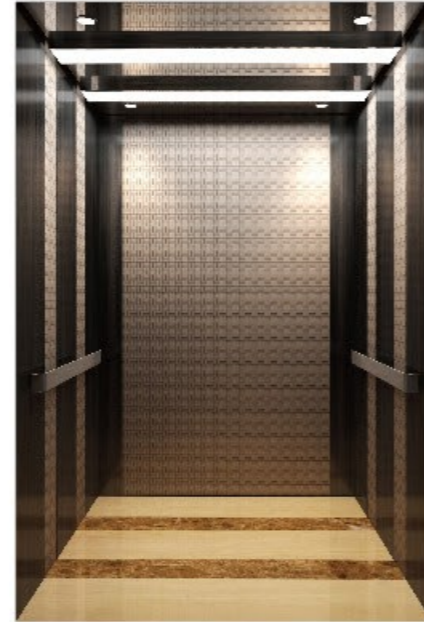
## Car series



**FJSL-ZH021**



**FJSL-ZH025**



**FJSL-ZH038**



**FJSL-ZH065**



**FJSL-ZH066**



**FJSL-ZH068**

Note: Any word in this publication is not responsible for function & quality of any products, or any expression and revision of sales contract.

## Landing door series



**FJSL-ZHM001**  
Titanium, mirror, etching



**FJSL-ZHM028**  
Mirror, etching



**FJSL-ZHM037**  
Black titanium, mirror, etching



**FJSL-ZHM039**  
Mirror, glass



**FJSL-ZHM050**  
Titanium, mirror, glass



**FJSL-ZHM058**  
Aluminum alloy profile, glass

# Decoration series

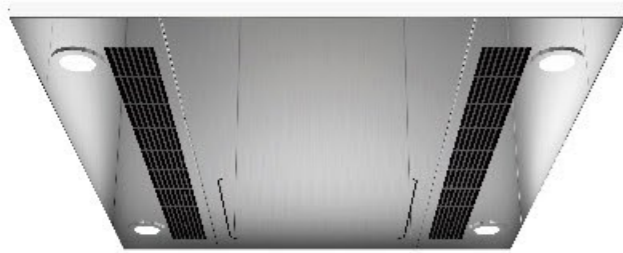
## Ceiling series



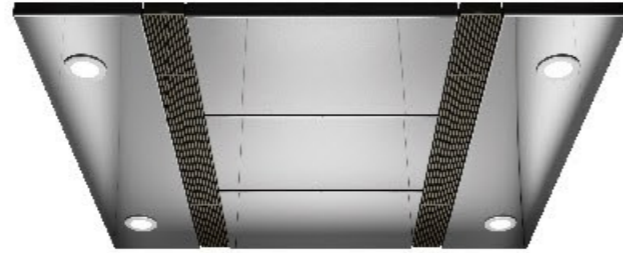
**FJSL-ZHD001** (Integrated)  
Hairline stainless steel frame, acrylic top plate, down lamp



**FJSL-ZHD002** (Integrated)  
Hairline stainless steel, energy saving lamp



**FJSL-ZHD005** (Integrated)  
Mirror stainless steel frame with down lamp



**FJSL-ZHD006** (Integrated)  
Mirror stainless steel frame with down lamp

## Handrail series



**FJSL-ZHFS001** Stainless steel brushed handrail



**FJSL-ZHFS005** Titanium matte short line single tube



**FJSL-ZHFS002** 6mm Stainless steel short line, arc head



**FJSL-ZHFS006** Combination of round log and titanium



**FJSL-ZHFS003** Double combination between stainless steel tube and mirror surface




**FJSL-ZHFS007** Combination of stainless steel tube mirror surface and titanium

Note: Any word in this publication is not responsible for function & quality of any products, or any expression and revision of sales contract.

# Overseas project



 **Dr. Soetomo General Hospital.**  
Surabaya. Indonesia

**Project introduction**  
We provide 5 units elevators consist of hospital lift. Service lift and Dumbwaiter.



 **University of Jember. East Java.**  
Indonesia

**Project introduction**  
800KG MR passenger & servicer elevators 5 units.



 **40 -42 Kiora Road Miranda.**  
Sydney. Australia

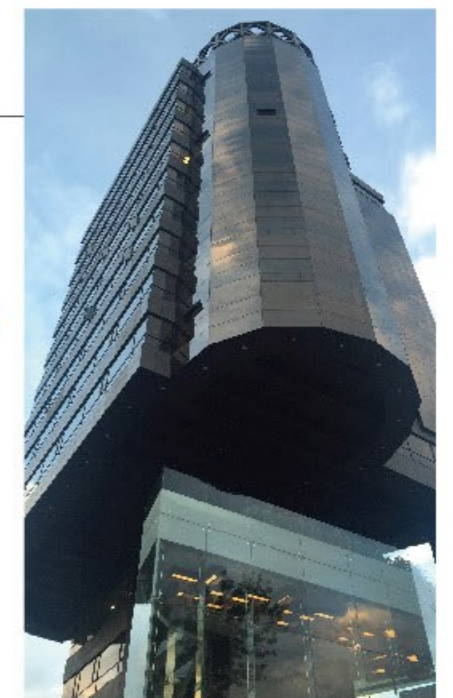
**Project introduction**  
1250KG MRL passenger elevator with WITTUR E120 fire rated doors, meets AS standard.





**Torres del catillo,**  
Ecuador

**Project introduction**  
1350KG SMR,  
22/22/22, 2.5m/s,  
black S.S etching  
car.



# Overseas project

 Project in Kazakhstan

**Project introduction**  
The project is located in Kazakhstan, FUJI SL Elevator provided a solution to meet large-passenger-flow, high-density and high-frequency delivery requirements, relying on its excellent performance.



City Garden Tower, Thailand

**Project introduction**  
High speed project in Thailand. 30 floors 30 stops with speed 3.0m/s



 Ivasika villa, Russia

**Project introduction**  
The project is located in Russia, FUJI SL to provide 320kg hydraulic villa elevator, unique design, perfect fit the original residential.



Hotel Samiria, Peru

**Project introduction**  
FUJI SL Elevator provides Panoramic elevator, 800KG, 9/9/9, MRL.



Hospital de ojos, EL Salvador

**Project introduction**  
FUJI SL provides typical hospital bed elevator with S.S. cabin and hand capped GOP.



Villa project, The Philippines

**Project introduction**  
FUJI SL provides the Home elevator 400KG, 2/2/2, together with steel structure shaft.



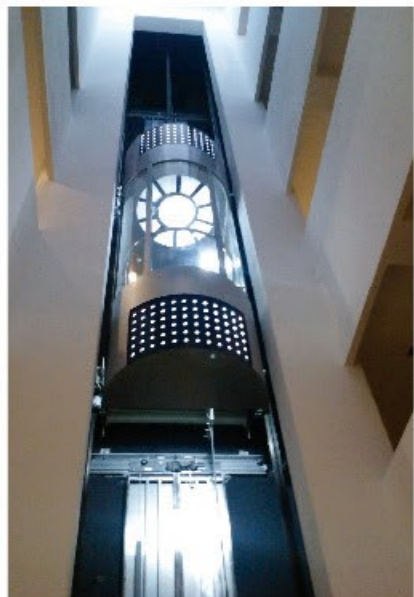
Mercedes-Benz showroom, Mexico

**Project introduction**  
The project is a Mercedes-Benz car sales center in Leoncity, Mexico, where two 5000KG car lifts are installed.



 Almaty Restaurant, Kazakhstan

**Project introduction**  
The project is located in Almaty in Kazakhstan. A well-known local restaurant installed two dumbwaiters, loading capacity up to 100 kg.



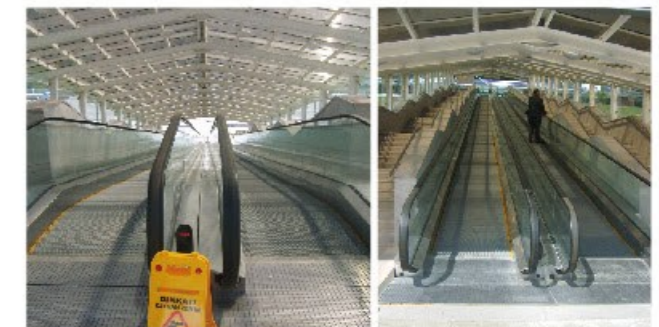
Laser & Cell Surgery Institute & Hospital, Dhaka, Bangladesh

**Project introduction**  
FUJI SL provides 1000kg Hospital lift, 1.75m/s, 10/10/10.



 Kastamonu Uzunyazi Airport, Turkey

**Project introduction**  
FUJI SL provides automatic sidewalks for this project, the brand of radiation and functional space of the combination of support, won the market Recognized.



# Passenger elevator with multi car doors series

## 4 Sides opening elevator

The new trial, the international pioneer

As a new trial, FUJI SL Boundless Sky Series Panoramic Elevator adopted the non traditional double counterweight traction system, made skillful shaft layout, developed the first panoramic elevator of 4 sides opening and without machine room in the world.



2

Without bracket for guide rail, brings about original structure and beautiful building.



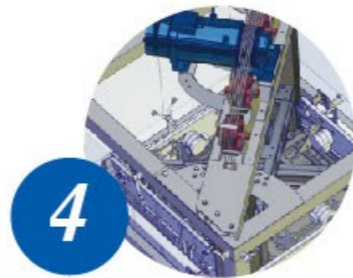
1

With double counterweight and 1:1 roping, it layouts the counterweight to the opposite corners of the shaft, and utilizing the shaft space to a maximum limit, which realized door opening from 4 sides, it is a original innovation in China.



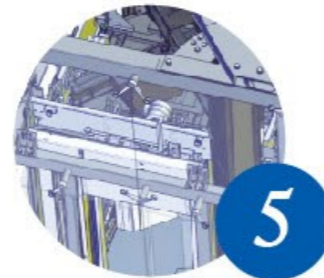
3

Cross beam for car frame top, the car bottom has brace structure to solve the partial load strength problem.



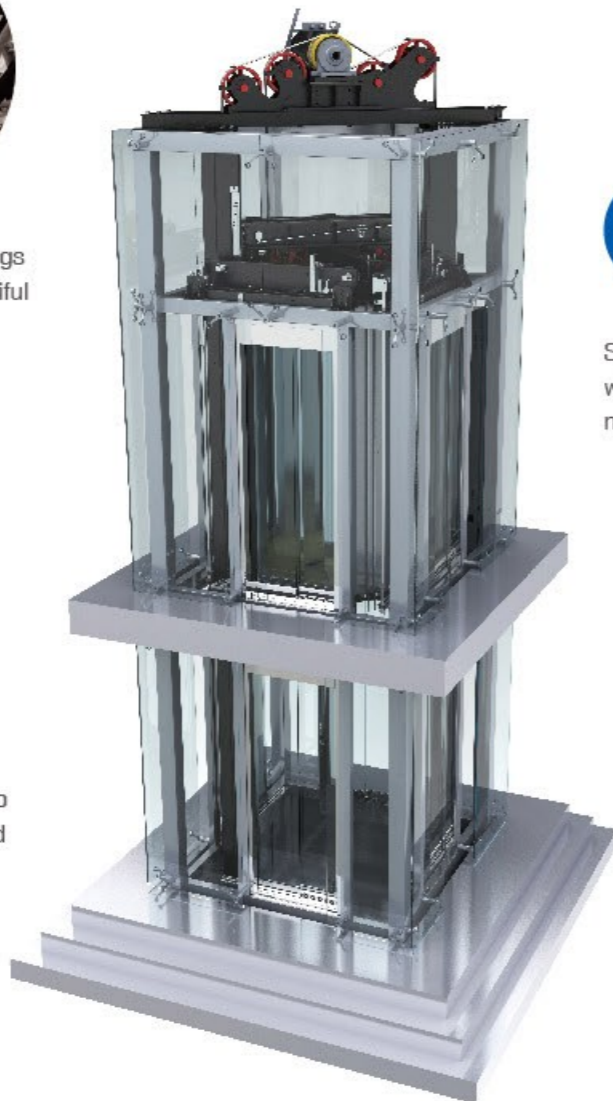
4

Speed governor with no tension wheel, to solve the problem of narrow shaft.



5

Independent HOP control realizes control of 4 doors.



## 4 Sides opening elevator

As the technological innovation of our company, the panoramic elevator of 4 sides opening and without machine room took half year to succeed in testing from product research to demo elevator, which initially created the first panoramic elevator of 4 sides opening and without machine room in the world.

1. With double counterweight and 1:1 roping, it layouts the counterweight to the opposite corners of the shaft, and utilizing the shaft space to a maximum limit, which realized door opening from 4 sides.
2. Without bracket for guide rail, brings about original structure and beautiful building.
3. Cross beam for car frame top, the car bottom has brace structure to solve the problem of 4 side openings and car partial load strength problem.
4. Speed governor with no tension wheel, to solve the problem of narrow shaft.
5. Independent HOP control realizes control of 4 doors.



### Layout for panoramic elevator with 3 sides opening doors

Car buffer	R1=30 (KN)	CW buffer	R2=20 (KN)	Door opening size	800x2100	Passenger	10 prs
Shaft size	2000x2200	Car size	1370x1370x2400	Speed	1.0(m/s)	Motor power	5.4 (kw)
Model Type	SL/MO800	Load	800Kg				

### Layout for panoramic elevator with 4 sides opening doors

Car buffer	R1=30 (KN)	CW buffer	R2=20 (KN)	Bearing beam counterforce	R3=50 (KN)	Load-bearing counter force	R4=35 (KN)
Shaft size	2000x2000	Car size	1540x1540x2400	Door opening size	800x2100	Passenger	10 prs
Model Type	SL/MO800	Load	800Kg	Speed	1.0(m/s)	Motor power	7.7 (kw)

Note: Only for reference, final manufacture please follow contract.